

**YOU ARE HERE
BEIJING**

Beijing hosted the Games in **2008**.

**SIXTH STOP
BEIJING!**

Which **country** is **Beijing** in?

Which **continent** is it on?

BEIJING ACTIVITY 1 PING PONG

Introduce a new ping pong-type game to other people.

Ping pong – table tennis – is the most popular sport in China, played by more than 200 million people. But ping pong was created in Britain! It was introduced to China in 1901 by British traders and settlers.

See if you can create your own version. To get started: find out how table tennis is played and try it yourself. Adapt it so anyone can play anywhere, *e.g. with or without a table, with or without bats, with different sorts of balls.*

Write up your activity as a Tokyo Ten. Use the My Workout template at: getset.co.uk/tokyo-home-activity



You have travelled **8,952 km** from Sydney to Beijing.

BEIJING ACTIVITY 2

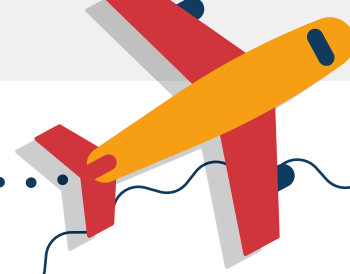
SUPERPOWER SHANG

Complete all three challenges in a Shang triathlon.

Challenge 1: Marching in time – with your friends or to the beat of a drum. Can you march forward, backwards and sideways and in a circle?

Challenge 2: Throwing a paper aeroplane – how far can you throw it?

Challenge 3: Travelling as fast as you can (run, cycle, push) – are you the fastest? Can you get faster next time?



The Shang Dynasty ruled China from 1600 BC to 1046 BC. Its army included foot soldiers – who marched in time, archers – who fired arrows long distances, and charioteers – who were incredibly fast.

BEIJING ACTIVITY 3

TREASURE TRAIL

Create a treasure trail to help archaeologists discover Fu Hao's treasures.

Write the names of the materials on separate pieces of paper. Write a simple clue to find each treasure, e.g. 'Enter here' for the front door. Place the treasures in different locations around your school or home. Put the clue to the next treasure on the trail alongside each treasure. Encourage your friends or family to take part in your treasure trail.

Find out more about the Shang Dynasty at: bbc.co.uk/bitesize/topics/z39j2hv

You could march while sitting down, using hands or feet only.



Fu Hao was a female leader of the Shang army. When she died in 1200 BC, she was buried with lots of treasures in a tomb in Yinxu.

MATERIALS

- Jade
- Bone
- Bronze
- Stone
- Ivory
- Pottery
- Cowry shell
- Sculptures

